

## Tuba

1. Sinfonie  
(1986)

Friedrich Radermacher

♩ = 120

Allegro

7

11

15

22

30

40

47

53

63

*f*

*p*

*rit.*

*a tempo*

*f*

*p*

*pp*

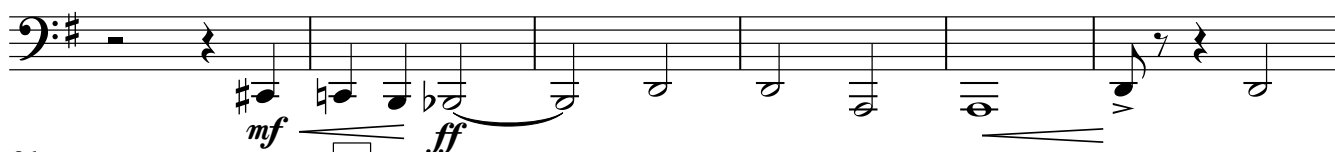
*ppp*

*mf*

*poco rit.*

*a tempo*

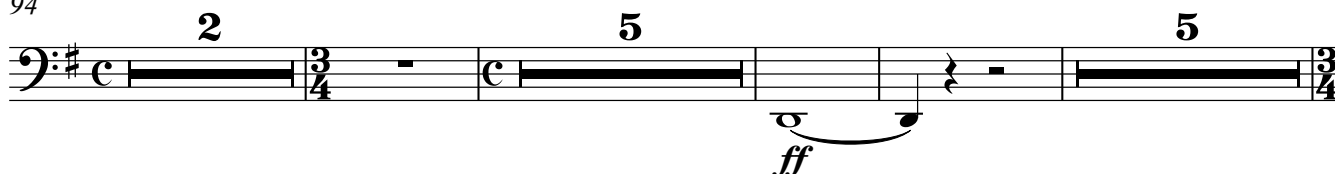
75



81



94



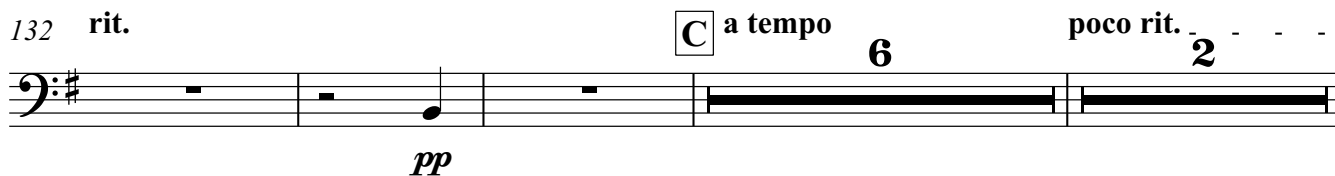
109



121



132 rit.

143 **D** a tempo

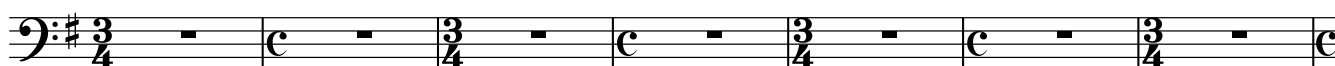
149



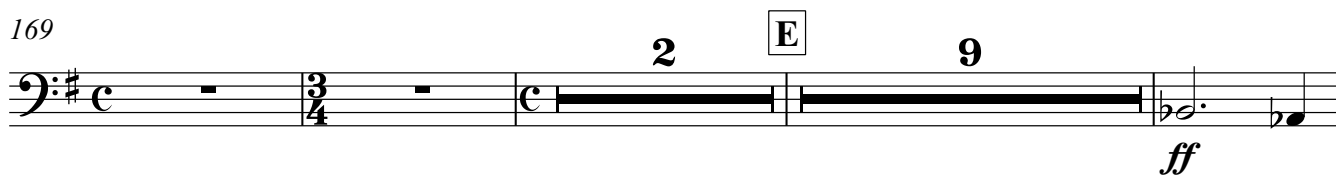
155



162



169



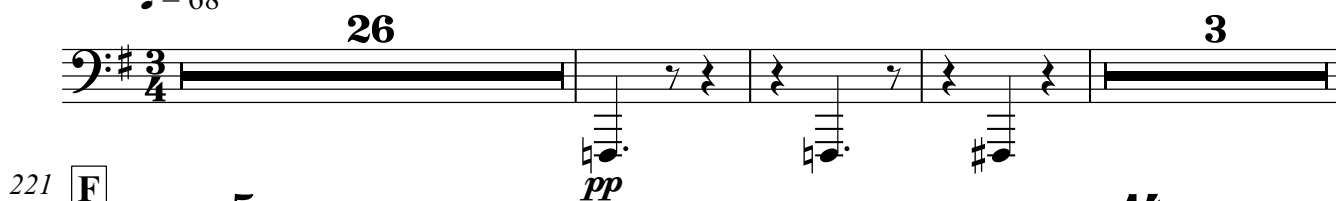
183



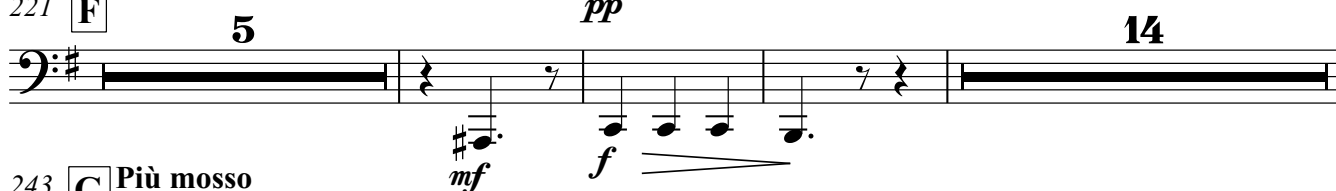
## 2. Satz

Poco adagio

♩ = 68



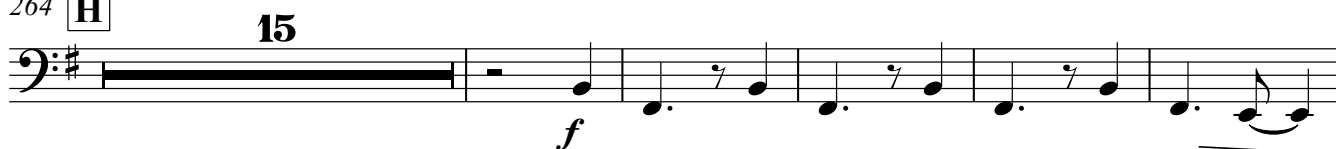
221 [F]



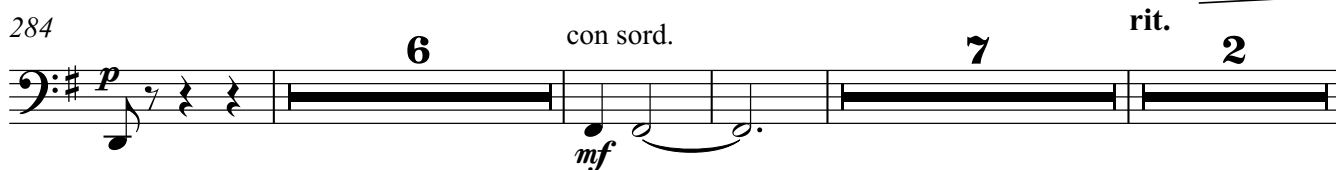
243 [G] Più mosso



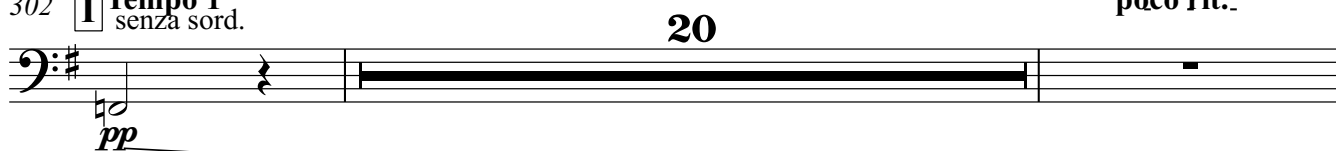
264 [H]



284



302 [I] Tempo 1



324 a tempo



331



## Allegro moderato

♩ = 138

4 6 10 3

*p*

21 **J** 13 con sord. 5

*f* *p* *f*

42 2 senza sord. *ff*

48 **K** 8 10 con sord. *pp* *f*

69 2 senza sord. *ff*

75 **L** 5 con sord. 2 *pp* *pp*

86 15 3 (con sord.) *pp* *p*

108 **M** 3 *mf*

116 senza sord. 3 *mf*

124 7 *f* *fp*

137

3 N 18

pp

162

10 con sord.

f

rit.

175

2 senza sord.

ff

3/4

## 4.Satz

Adagio  
♩ = 72

4. Satz

rit.

19 2



202 **a tempo**

**27**

*ppp*

233

*rit.* 8

*ppp*

## 5. Satz

Allegro con brio

$\text{♩} = 140$

5. Satz

4

9

16

10

*f*

*f*

*p*

*pp*

30 **O** 22 **P**

57 7 con sord. *pp* *f*

70 13 **Q** 4 *pp*

90 3

98 con sord. *mf* *f*

102 4 **R** 7 senza sord. *f*

115 11

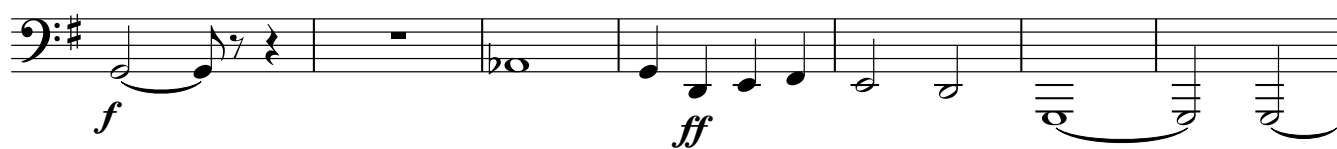
130 **S** 26 **T** *f* *f*

161 8 *f* *ff*

174

Detailed description of the musical score: The score is for a Tuba part, spanning measures 30 to 174. It is written in bass clef with a key signature of one sharp (F#). The score is divided into systems, each starting with a measure number. Measures 30-56 contain a long rest (22 measures) followed by a melodic line starting on B2, marked with a rehearsal mark 'O' and 'P'. Measures 57-69 contain a melodic line starting on B2, marked with a rehearsal mark 'Q' and '7', with dynamics *pp* and *f*. Measures 70-89 contain a melodic line starting on B2, marked with a rehearsal mark 'Q' and '13', with dynamics *pp* and *f*. Measures 90-97 contain a melodic line starting on B2, marked with a rehearsal mark 'Q' and '3'. Measures 98-101 contain a melodic line starting on B2, marked with a rehearsal mark 'Q' and '3', with dynamics *mf* and *f*. Measures 102-109 contain a melodic line starting on B2, marked with a rehearsal mark 'R' and '4', with dynamics *f* and 'senza sord.'. Measures 110-129 contain a melodic line starting on B2, marked with a rehearsal mark 'R' and '11', with dynamics *f* and *ff*. Measures 130-159 contain a melodic line starting on B2, marked with a rehearsal mark 'S' and '26', with dynamics *f* and *ff*. Measures 160-173 contain a melodic line starting on B2, marked with a rehearsal mark 'S' and '8', with dynamics *f* and *ff*. Measure 174 is a final measure with a melodic line starting on B2.

181



188

